

er how you are, what you're doing way up there.
crying, cause you miss us all down here. Only go
e and take my hand. When I see you again. When
he chance, to hold you one last time. It hurts me
ay goodbye. You're never really gone, your memo
e than words could ever help me to explain. Only
m on will end. When I see you again. I'll see you
the song is over and the curtain falls down. I'll see
an show me what it's like. Only God knows when,
I'll say how you been, when I see you again. I'll s
you, whenever I'm alone. I h you in my prayer
ws. I wonder how you are, what you're doing way
or are you crying or are you laughing, cause you
ou'll smile and take my hand. U
ad the chance, to hold you
ve to say goodbye. You're never
you remains. I miss you more than words could eve
his road I'm on will end. When I see
ut. U the set runs out. When the song is over and the
side, you can show me what it's l
ake my hand. I'll say how you been
I still talk to you, whenever I'm alone. I hear you
the wind that blows. I wonder how you are, what
re. Are you laughing or are you crying, cause you
od knows when, you'll smile and take my hand. U
e you again. I wish I had the chance, to hold you
know you never got to say goodbye. You're never
y remains. I miss you more than words could eve
knows when, this road I'm on will end. When I see
the set runs out. When the song is over and the
ou on the other side, you can show me what it's l
ou'll smile and take my hand. I'll say how you been
I see you again. I still talk to you, whenever I'm a
feel you in the wind that blows. I wonder how y

Lillia

Typeface



Lillia

Designed by Harold Maclsaac

Originating as a Typeface project, Lillia is a sans-serif typeface that was created as way to capture the spirit and energy of my mother. The form of the letters comes inspired by her own handwriting with some alterations so as to keep it from becoming a handwritten font. Lillia has the potential for screen use, but is strongest when used for print design. The intent was to create a typeface that, although smaller than others of its font point size, it still presents itself with a big and strong voice. It is also with this all in mind that I have decided upon the name “Lillia” for my typeface, as it is a play on her name. The project began with designer Paul D. Hunt’s typeface, Adobe Source Sans Pro, as a starting point.

Hope
faith
Love

one day at a time!

Love
Mom ☺

Here we have a sample of Mom's original handwriting, the inspiration for what would become the Lillia typeface.

Uppercase

**ABCDEFGHIJKLMN
OPQRSTUVWXYZ**

Lowercase

**abcdefghijklmn
opqrstuvwxyz**

Numbers

1234567890

Punctuation

!@()-_“” ;: \ / ? ' . ,

72 Point

Remember

64 Point

Remember k

48 Point

Remember kid,

36 Point

Remember kid, there's

24 Point

Remember kid, there's heroes and legends. Heroes get remembered

18 Point

Remember kid, there's heroes and there's legends. Heroes get remembered but legends never die. Remember your heart kid, and you'll never go wrong.

18 Point /
25 Point

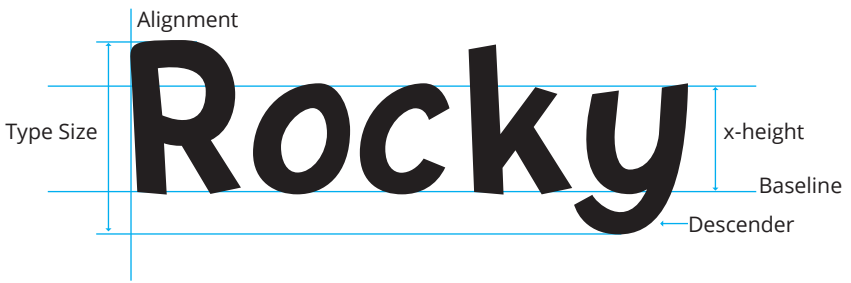
Make a wish and place it in your
want. Everything you want. Do y
believe it can come true. You nev
miracle's gonna come from. The
smile. The next wish come true. I
it's right around the corner. And

36 Point /
38 Point

Make a wish and
your heart. Anyt
want. Everything
Do you have it? c

64 Point /
64 Point

Make a w
and place



Remember, kid
there's Heroes
and **Legends**
there's
Heroes get remembered
but **Legends**
never die.



Follow your heart, kid
and
you
can **never**
go wrong.

-The Babe
The Sandlot (1993)

Your future hasn't been written yet.

No one's has.

Your future is whatever you make it.

So make it a good one.

One Day
At a Time

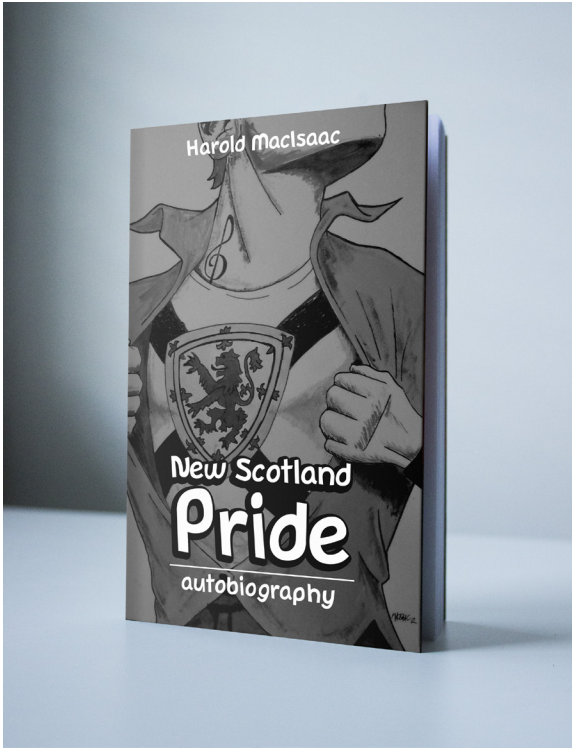
Ye of little
Faith

Have courage
and
be **kind**

Don't be afraid to

believe

in yourself



Use-Case Examples

The Lillia typeface is not a letterset you would generally use to present large body of text (*akin to typefaces like Helvetica and Times New Roman*). It has a much stronger use in the realm of print and screen. Posters, banners, ads, signage, book design, etc. are all prime uses for Lillia. Included here we have examples of the typeface in book design, logo design and poster design (one in a bus shelter and one on a billboard).



Scenic
nature
Tours



wind that blows. I wonder
you laughing or are you
knows when, you'll smile
you again. I wish I had the
never got to see you
remains. I miss you more
knows when, this road I
set runs out. When I see
other side, you can
smile and take my hand.
I still talk to you
in the wind that blows
there. Are you laughing
Only god knows when, you
When I see you again. I wish
hurts me to know you no
memory remains. I miss
ly god knows when, this
when the set runs out
on the other side
smile and take
again.
I feel you in the
you're doing way up there
down here. Only god
see you again. When I see
time. It hurts me to
your memory
me to explain. Only god
I'll see you when the
rain falls down. I'll see you
Only god knows when, you
when I see you again. I'll
hear you in my prayers,

